

# Product Selection Guide



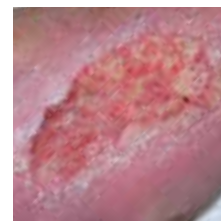
Biatain Silicone

## Non-infected wounds

All wounds contain bacteria, but they may not necessarily represent a problem for wound healing. If a wound is in bacterial balance, the likely signs are:

- Normal healing
- No odour
- Pink/red healthy granulation tissue

Biatain foam dressings are highly absorbent foam dressings indicated for exuding acute and chronic wounds.



Biatain Ag

## Infected wounds

Wounds that are not healing normally may have a bacterial imbalance resulting in local infection of the wound. Likely signs of bacterial imbalance / local infection are:<sup>9</sup>

- Delayed or stalled healing
- Absent/abnormal/discooured granulation tissue
- Odour
- Increased pain at wound site
- Increased exudate

*Diabetic foot ulcers do not always present with the classical signs of local infection.*



Biatain IBU

## Painful wounds

Studies show that six out of ten wounds are painful. Assessment and management of wound pain should be part of a holistic approach to wound management, as pain affects a patients' quality of life and may slow down the wound healing process.<sup>10,11</sup> The two main causes of wound pain are:  
1) Tissue damage → Nociceptive pain 2) Nerve damage → Neuropathic pain.

First, treat the possible causes of pain, e.g. infection or uncontrolled oedema. If the pain persists, consider systemic or local pain treatment. **Wound healing does not have to be painful.**



Biatain Alginate

## Wounds with slough and/or cavity

Some wounds may have slough and/or cavity. For such wounds that are in bacterial balance, consider using an absorbent alginate dressing with superior tensile strength. Likely signs of such wounds:

- Normal healing
- Slough and/or depth
- No odour
- Moderate to heavy exudate



Biatain Alginate Ag

## Infected wounds with slough and/or cavity

For wounds that are in bacterial imbalance and have slough and/or cavity – likely signs include:

- Delayed or stalled healing
- Odour
- Increased exudate
- Cavity and/or slough



Biatain Super

## Non-infected, highly exuding wounds

Most suitable for use on highly exuding wounds, such as: pressure ulcers, leg ulcers, non-infected diabetic foot ulcers, second degree burns and surgical wounds.

- Available in adhesive and non-adhesive
- Non-adhesive dressings are suitable for patients with dry or fragile skin
- Can be used under compression bandaging

